



Morgans

PROPERTY

21 Bramble Crescent, Dunfermline, KY11 8PZ

Offers Over £299,950







We are delighted to bring to the market this excellent executive detached villa within exclusive estate. A credit to the present owners and presented to a "show home" standard with quality fixtures and fittings throughout. The property is offered in pristine move in condition with fully enclosed landscaped gardens providing a child and pet safe environment and a woodland backdrop so not overlooked. The accommodation briefly comprises entrance hall, w.c facilities, lounge, dining kitchen leading to utility room and storage. On the upper level four bedrooms with master en-suite and family bathroom. Double monobloc driveway leads to single garage. The property is double glazed with gas central heating.



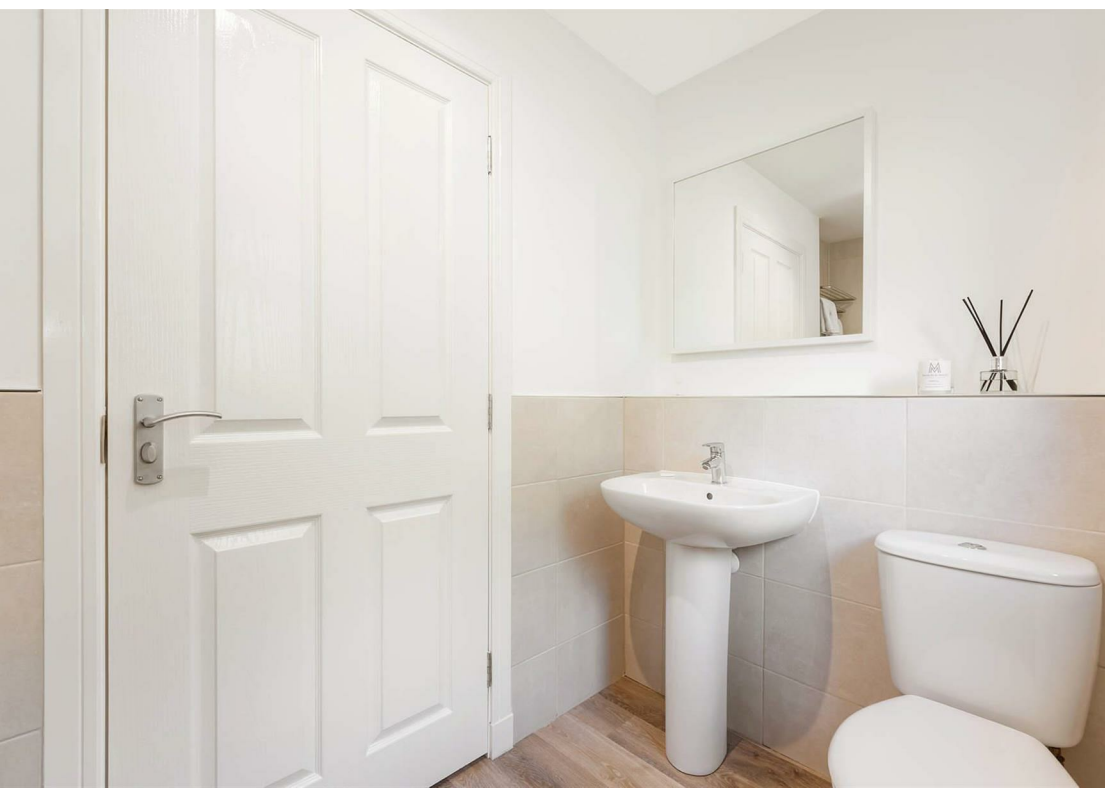


LOCATION

The Royal Burgh of Dunfermline is of considerable historic interest and is the resting place of King Robert the Bruce. Carnegie's Birthplace museum, the Abbey and Abbot House reflect the historic interest of the town, whilst recent developments have seen Dunfermline move into the modern era with Carnegie Museum and Library. Dunfermline is located approximately five miles from the Forth bridges and is therefore particularly popular with commuters to Edinburgh and many parts of the central belt with easy access to the M90 motorway with its direct links to Edinburgh, Perth and Dundee and across the Kincardine Bridge by way of motorways to Stirling, Glasgow and the West. It benefits from a full range of shops, social and leisure facilities and educational establishments associated with a modern town. The local railway stations provide a regular service to Edinburgh with intercity links to other parts of the UK. There are regular and convenient bus services both local and national.

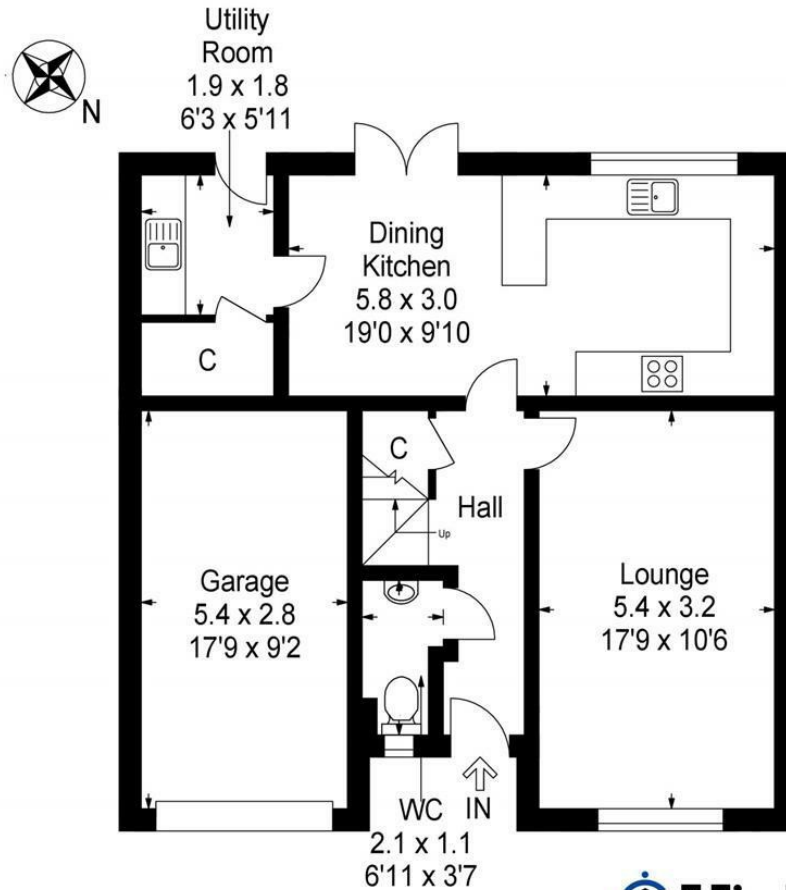
EXTRAS INC. IN SALE

All floor coverings, blinds, curtains, bathroom and light fittings together with integrated appliances.

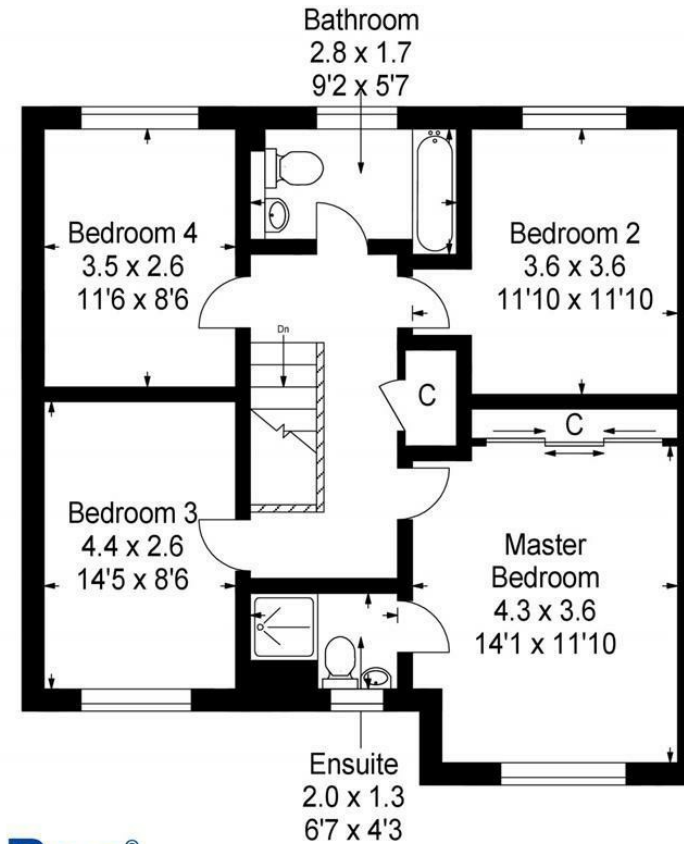








Ground Floor



First Floor



This plan is for layout guidance only and is not drawn to scale. Whilst every care is taken in the preparation of this plan, please check all dimension and shapes before making any decision reliant upon them. All room dimensions taken through cupboard/wardrobes to wall surface where possible or to surfaces indicated by arrow heads. (ID 110927)

© VistaBee 2022



SOLICITORS | PROPERTY

33 East Port, Dunfermline, Fife, KY12 7JE

Tel: 01383 620222 Fax: 01383 621213

www.morganlaw.co.uk



espc

rightmove

Zoopla.co.uk

onTheMarket.com

s1homes.com



AGENTS NOTE These particulars do not form part of any contract and the statements or plans contained herein are not warranted nor to scale. Approximate measurements have been taken by electronic device at the widest point. Services and appliances have not been tested for efficiency or safety and no warranty is given as to their compliance with any Regulations. No movable items will be included in the sale.